



LEADING THE FUTURE OF
LIGHTING + TECHNOLOGY

Pilot LED Project Informs Standardized Approach for Portfolio-wide Lighting Upgrade

Case Study

 **Shakopee, Minnesota**
150K Square Foot

Interior Lighting—Warehouse + Office

Exterior Lighting—Building, Parking and Canopy



Initial Project

A national owner of last-mile logistics real estate plans to upgrade lighting to energy-efficient LEDs across its 14,000 properties, enhancing light levels for exteriors, warehouses and offices.

But how and where to begin? With 539 million square feet of facilities throughout the U.S., the company sought the help of energy services expert Energy Management Collaborative (EMC), whose turnkey approach for a pilot site would inform a broader nationwide rollout.



98,418

Annual kWh Saved



\$11,908

Annual Energy Savings



\$3,000

Annual Maintenance Savings



\$5,496

Utility Incentives



Solutions + Results

Energy Management Collaborative's design teams swiftly created solutions for the Shakopee location, completing an LED lighting installation in 11 days. The new design ensures consistent lighting levels across various spaces and includes high bay fixtures with motion sensors for enhanced energy efficiency through occupancy sensing and daylight harvesting.

In total, EMC captured \$5,496 in utility incentives, resulting in annual savings of 98,418 kWh and \$11,908, along with a \$3,000 reduction in maintenance costs.

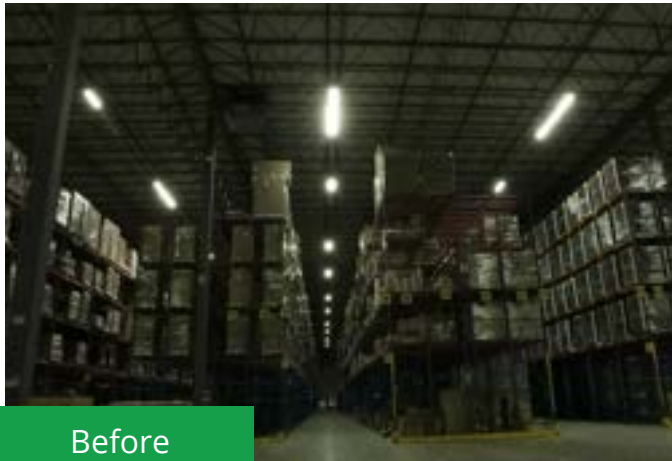
This upgrade standardizes lighting infrastructure and positions the company for future improvements in lighting and smart building management systems.



Before



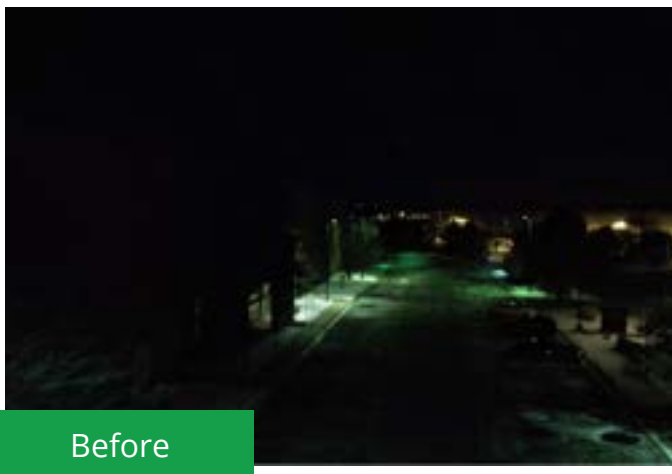
After



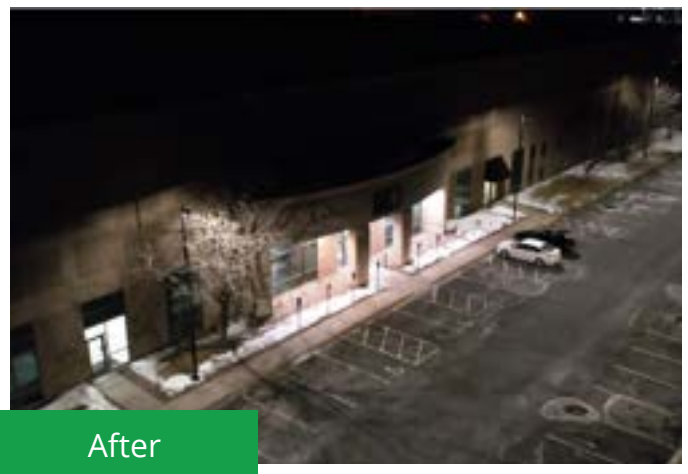
Before



After



Before



After